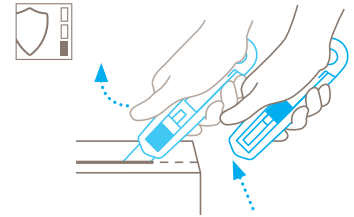


## TECHNICAL DATA SHEET

### SECUNORM PROFI40 MDP NO. 11900771

#### Safety technology



#### Automatic blade retraction – a high degree of safety

The automatic blade retraction of the SECUNORM PROFI40 MDP guarantees a high degree of safety from cut injuries. As soon as you have started to cut, take your thumb off the slider. Then the blade will retract into the handle immediately after leaving the material being cut.



#### ROBUST SAFETY KNIFE WITH AN EXTENDED BLADE LENGTH OF 40 MM AND AUTOMATIC BLADE RETRACTION.

**Order No.** 11900771.02

#### Deep cut. High quality. Metal detectable.

Just like the other PROFIs, the SECUNORM PROFI40 MDP is a professional cutting tool. Particularly when it comes to cutting open all different types of sacks. Some cutting tasks demand a decent blade length. The 40 mm blade extension of the robust SECUNORM PROFI40 MDP therefore makes it an excellent choice. It is also paint-free and metal detectable, ideal for industries wanting to avoid foreign objects entering and disrupting their production processes.

#### Metal detectable

While working, a cutting tool – or parts of it – can sometimes get lost. But only for a short while. The metal detectable plastic and distinctive blue colour ensures you'll find it again fast.

#### Paint-free

You would like to avoid risks in your job, wherever possible? That's understandable. An unpainted handle minimises the risk of contamination of the production process.

#### Robust handle

The plastic insert of the SECUNORM PROFI40 MDP is in an aluminium handle. With its robust design, it is predestined for high cutting frequencies and a long life.

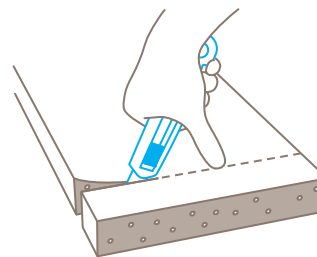
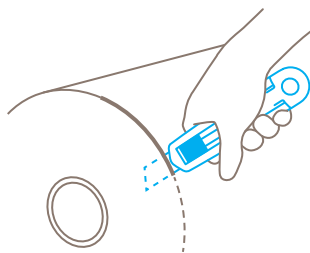
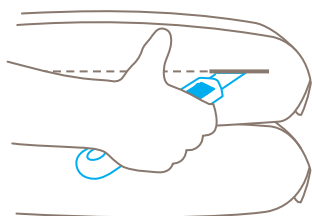
#### Very large cutting depth

The extra large cutting depth is ideal for multi-ply cardboard and bagged goods, and, for example, to cut any type of film. The stainless quality blade is characterised by an extremely low risk of breakage.

#### Tool-less blade change

Blade changing is quick to work out. Literally. You just need to slide the metal detectable plastic insert out of the handle and replace the old blade with a new one.

## USAGE



## PRODUCT FEATURES

### Technical features



High safety



Metal detectable



X-ray detectable



Tool-less blade change



Very abrasion resistant



Very ergonomic



Cutting depth



For right and left handers



Stainless

### Main cutting materials



Cardboard: up to 3-ply



Wrapping, stretch and shrink foil



Plastic strapping band



Tape



Bagged goods



Foam, polystyrene



Fleece



Layers of foil or paper



Yarn, cord



Felt



PVC



Textile, material

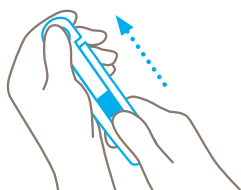
### Installed blade



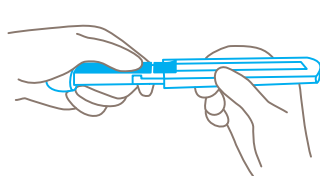
**NO. 17940**

0.50 mm, 71.2 mm long, stainless

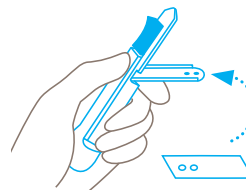
## BLADE CHANGE



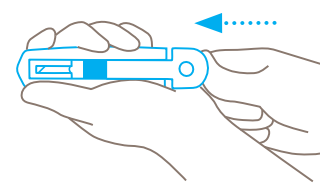
Use the slider to **push** the plastic insert back and out of the handle. **Don't** pull the insert while holding onto the slider.



When the slider and blade leave the handle, position your **index finger under the blue blade holder** to hold it tight.



Use your index finger to slowly **fold out the blade holder downwards**. Use the other hand to remove the blade to either replace it or turn it around (for left handers).



Make sure you position the blade **exactly over the locating lugs**, close the blade holder upwards. **Attention:** Never hold your hand in front of the blade exit!

## SERVICES OFFERED



Safety poster



Training video



Technical data sheet



Consulting service

## PRODUCT AND PACKAGING DETAILS

Order No.	NO. 11900771.02	Packaging unit	1 in single unit box
Knife size (L x W x H)	143 x 17 x 31 mm	Size Single unit box	154 x 22 x 38 mm
Weight knife	84.4 g	Weight single unit box	97.2 g
Basic material	Aluminium	EAN Code single unit box	4002632802362
Cutting depth	36 mm	Quantity in outer pack	10 knives
		Size outer pack	115 x 80 x 160 mm
		Weight outer pack	1019,0 g
		EAN Code outer pack	4002632852367
		Customs tariff number	82119300

## SAFETY CERTIFICATE

Date of issue	08.12.2020
Certification	GS certificate NO. 180655-7242-55094-2020

### Certificates and awards



## SAFETY ADVICE

To ensure that you use your new MARTOR knife safely and most effectively, please read and note the following user-instructions. Please keep the written guide in a safe place so that you can access it at any time.

**1. General application instructions:** Please always use the product carefully for manual cutting work only and not for any purposes other than those that are intended. Please take the correct handling and the proper use of the knives into account in this regard. As an additional safety measure, we recommend the wearing of safe gloves.

**2. Special application instructions to avoid the danger of injuries:** Always take great care when handling the product. Before first use, familiarise yourself with the safety technology and how it works. Before every further use, check the knife for proper functioning. Only use cutting tools that are in perfect condition with sharp, clean and undamaged MARTOR blades. Also make sure that the knife's operation is not impaired by the material to be cut or by dirt or particle deposits around the blade. **CAUTION: The blade is sharp and can result in serious and deep cuts. Therefore, never reach into the blade!** Do not place your free hand in the line of cutting and never cut directly towards you.

**3. Replacement of spare parts:** Replace any blades that become dull at the right time! Use only the replacement blades from MARTOR for this purpose. Dispose of old blades in a proper fashion. They should not be placed in a waste paper bin, as this poses a considerable danger of injuries. Never perform any repairs yourself. If the knife shows signs of aging or any other wear, e.g. which impair safety features, blade changing or usage, the knife must be taken out of service and replaced. Do not modify this product in any way. Modifications of any kind may impair product safety. **CAUTION:** The risk of injury caused by manipulation of this product is extremely high.

**4. Non-use of the knife:** Always secure the blade in such a way (depending on product type) that injuries due to cuts are excluded. Store the knife in a secure place.

**5. Care instructions:** To guarantee a long service life, always keep the knife clean and do not expose it to unnecessary soiling and humidity.

**CAUTION: No liability will be assumed for consequential losses. Subject to technical changes and errors! This knife does not belong in the hands of children!**

## ACCESSORIES

### BELT HOLSTER S WITH CLIP

NO. 9920



What do you do with your cutting tools when you are not actually using them? The MARTOR BELT HOLSTER S is a robust holder that allows you to carry all compact MARTOR knives as well as our safety scissors at all times. In addition, the compartments are designed to allow you to load different tools: for example you can also carry a pen or a pack of blades. The MARTOR BELT HOLSTER is the ideal place to stow your tools safely when moving from A to B - and have them at hand, as soon as they are required.

### HOLSTER SMALL

NO. 9842



This blue plastic HOLSTER is just like the black version, only smaller. Use it to safely store and transport for example for the SECUNORM 500 or the SECUNORM 300. With this HOLSTER on your hip, your knife will always be within grasping range.

### USED BLADE CONTAINER

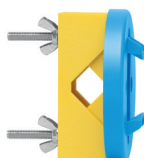
NO. 9810



You can fill the USED BLADE CONTAINER with the content of your SAFEBOX. Or directly with your used blades. When the box is full, turn the lid until it shuts. Now the box cannot be reopened. The next step is to safely and completely dispose of the filled USED BLADE CONTAINER as normal waste.

### WALL MOUNT BRACKET USED BLADE CON- TAINER

NO. 9845



Include it in your order now! With this mounting bracket you can fix your USED BLADE CONTAINER to a central location. Use the clamp and screws and nuts supplied with the product to attach it to either a pipe or a rod.

### SAFEBOX

NO. 108000



The SAFEBOX is large enough to store a large number of used blades safely. And at the same time, it is compact enough to carry with you. The two slits are not only used for filling, but also to "shorten" your snap-off blades. When your SAFEBOX is full, empty it into your USED BLADE CONTAINER.

### MDP TEST CARD SET

NO. 9910



There are five cards with different plastic balls in the MDP TEST CARD SET – between 2.5 mm and 8 mm in size. You can reliably test the effectiveness of your metal detectors using the "visiting card".

## MANUFACTURER

MARTOR KG | Lindgesfeld 28 | 42653 Solingen | Germany  
T +49 212 73870-0 | info@martor.de | www.martor.com