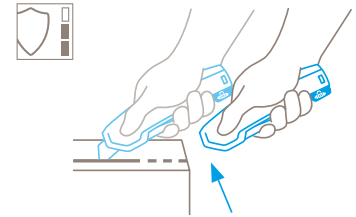


TECHNICAL DATA SHEET

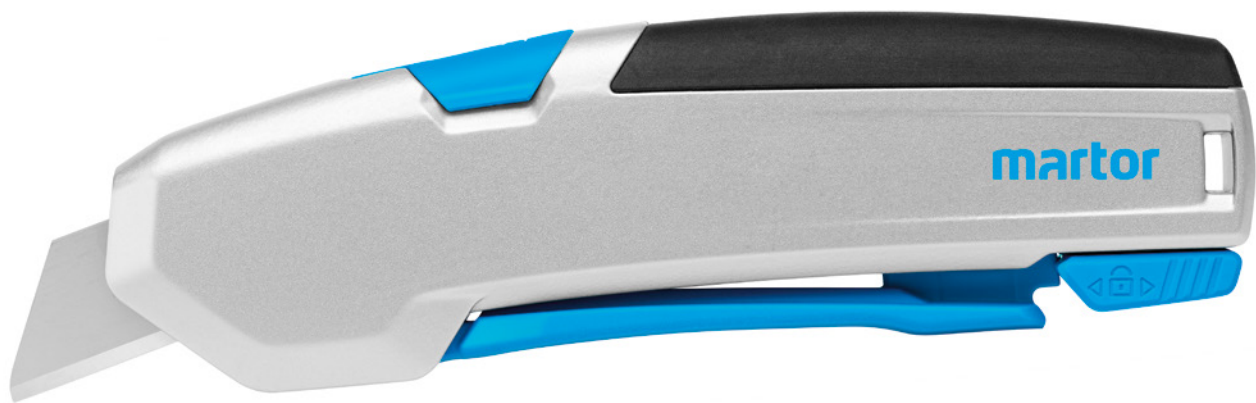
SECUPRO 625 NO. 625001

Safety technology



Fully automatic blade retraction – a very high degree of safety

The fully automatic blade retraction of the SECUPRO 625 guarantees a very high degree of safety from cut injuries. The blade withdraws into the handle immediately after leaving the material being cut. Even when the lever is still being squeezed.



SQUEEZE-LEVER KNIFE WITH LARGER CUTTING DEPTH AND FULLY AUTOMATIC BLADE RETRACTION.

Order No. 625001.02

Long lever. Long blade. Long-lasting enjoyment. With rounded-tip trapezoid blade.

The SECUPRO 625 is at the forefront of our ergonomic squeeze-grip knives. Its aspiration is very clear: premium. Because it offers all that professional users require: an aluminium handle, an easy and smooth lever to release the blade, a large cutting depth combined with a very high safety due to the fully automatic blade retraction and a comfortable blade change. All in all, you will know that you have a high-end cutting tool in your hands.

Excellent ergonomics

We have rarely produced a cutting tool before that fits so perfectly into the heavy users hand as the SECUPRO 625. The long and smooth lever, the round shape of the handle and the soft grip at the back of the knife – it's more than worth testing it!

Robust and balanced

You can see and feel that the handle is made of high-quality aluminium. Its robust construction goes hand in hand with

an optimal weight distribution. Consequently, there's almost no risk of weakening for tool and user. Not even when cutting very heavily.

Large cutting depth

The long blade extension is ideal for cutting up to 3-ply cardboard boxes, rubber, material on reels and many more applications. The blade can be changed in a few steps – by operating the blade change button and pressing the lever, it can be easily pulled out.

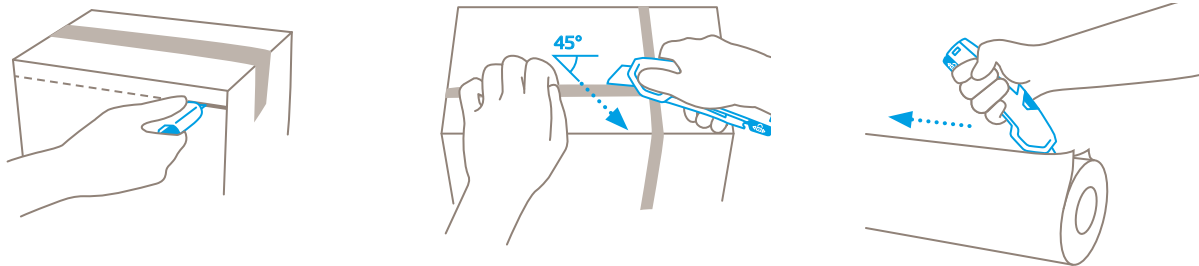
For many cutting types

The overall package of the SECUPRO 625 is quite unique – and so are all separate features. Even saw cutting is safe – thanks to the protecting blade retraction. And you can enlarge the number of different application areas by simply installing one of the optional blades.

Safe along the line

While you rely on the blade retraction at the front part of the handle, there's another safety feature built in for even more protection. You can lock the lever and thus avoid that the blade is released unintentionally.

USAGE



PRODUCT FEATURES

Technical features

 Very high safety	 Tool-less blade change	 Very abrasion resistant	 Very ergonomic
 Safety lock	 2-cutting edge blade	 Cutting depth	 Rounded-tip trapezoid blade
 Ceramic blade insertable	 Soft grip	 For right and left handers	 Lanyard hole
 Heavy-duty	 Printable for promotional purposes		

Main cutting materials

 Cardboard: up to 3-ply	 Plastic strapping band	 Bagged goods	 Slabbing material off a roll
 Rubber	 Leather	 PVC	 Carpet
 Textile, material	 Wrapping, stretch and shrink foil	 Layers of foil or paper	 Felt
 Tape	 Fleece		

Installed blade



NO. 60099
0.63 mm, rounded blade tips, deep-edged

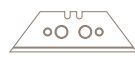
Optional blade



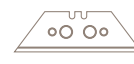
NO. 60099C
0.65 mm, ceramic, rounded blade tips, deep-edged



NO. 98
0.63 mm

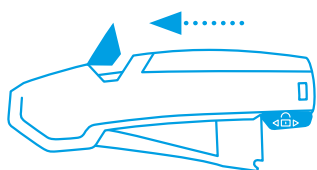


NO. 99
0.63 mm, deep-edged

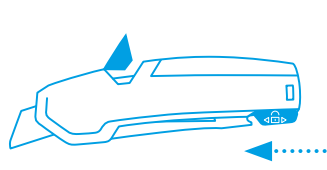


NO. 199
0.63 mm, deep-edged, stainless

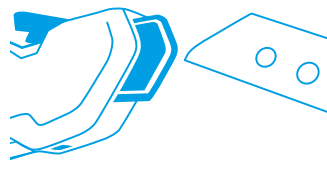
BLADE CHANGE



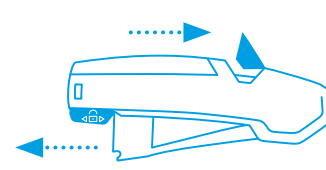
Pull the **blade change button** to the top and release the lever. Blade and blade holder will come out of the handle.



Secure the lever with the safety device and turn the handle so that the **transparent blade cover is facing upwards**.



Now **reverse or change** the blade. Make sure that the blade is exactly positioned on the cams on the blade holder.



Slide the lock to the rear position, so that the **lever can be released** again. **Then** push the blade change button back into the handle and continue cutting.

SERVICES OFFERED



Safety poster



Training video



Technical data sheet



Consulting service

PRODUCT AND PACKAGING DETAILS

Order No.	NO. 625001.02	Packaging unit	1 in single unit box
Knife size (L x W x H)	154 x 22 x 59 mm	Size Single unit box	160 x 26 x 64 mm
Weight knife	151.0 g	Weight single unit box	165.0 g
Basic material	Aluminium	EAN Code single unit box	4002632921865
Cutting depth	21 mm	Quantity in outer pack	10 knives
		Size outer pack	133 x 133 x 163 mm
		Weight outer pack	1760.0 g
		EAN Code outer pack	4002632973185
		Customs tariff number	82119300

SAFETY CERTIFICATE

Date of issue	17.06.2015
Certification	GS certificate NO. 602091-5862-55094-2015/2 C

Certificates and awards



SAFETY INSTRUCTIONS

To ensure that you use your new MARTOR knife safely and most effectively, please read and note the following user-instructions. Please keep the written guide in a safe place so that you can access it at any time.

1. General application instructions: Please always use the product carefully for manual cutting work only and not for any purposes other than those that are intended. Please take the correct handling and the proper use of the knives into account in this regard. As an additional safety measure, we recommend the wearing of safe gloves.

2. Special application instructions to avoid the danger of injuries: Only use knives that are in perfect condition and have sharp, clean and undamaged MARTOR blades. Employ the utmost care when handling the knives. Prior to use, familiarise yourself with the safety features and their functioning. Ensure that these safety features are not impaired by the type of material to be cut. **CAUTION:** The blade is sharp and can result in serious and deep cuts. Therefore, never reach into the blade! Do not place your free hand in the line of cutting and never cut directly towards you.

3. Replacement of spare parts: Replace any blades that become dull at the right time! Use only the replacement blades from MARTOR for this purpose. Dispose of old blades in a

proper fashion. They should not be placed in a waste paper bin, as this poses a considerable danger of injuries. Never perform any repairs yourself. If the knife shows signs of aging or any other wear, e.g. which impair safety features, blade changing or usage, the knife must be taken out of service and replaced. Do not modify this product in any way. Modifications of any kind may impair product safety. **CAUTION:** The risk of injury caused by manipulation of this product is extremely high.

4. Non-use of the knife: Always secure the blade in such a way (depending on product type) that injuries due to cuts are excluded. Store the knife in a secure place.

5. Care instructions: To guarantee a long service life, always keep the knife clean and do not expose it to unnecessary soiling and humidity.

CAUTION: No liability will be assumed for consequential losses. Subject to technical changes and errors! This knife does not belong in the hands of children!

ACCESSORIES

BELT HOLSTER L WITH CLIP NO. 9922



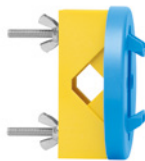
What do you do with your cutting tools when you are not actually using them? The MARTOR BELT HOLSTER L is a robust holder that allows you to carry all large MARTOR knives as well as our safety scissors at all times. In addition, the interior and exterior pockets are designed to allow you to load different tools: for example you can carry an extra safety knife, a pen and a pack of blades. The MARTOR BELT HOLSTER is the ideal place to stow your tools safely when moving from A to B - and have them at hand, as soon as they are required.

USED BLADE CONTAINER NO. 9810



You can fill the USED BLADE CONTAINER with the content of your SAFEBOX. Or directly with your used blades. When the box is full, turn the lid until it shuts. Now the box cannot be reopened. The next step is to safely and completely dispose of the filled USED BLADE CONTAINER as normal waste.

WALL MOUNT BRACKET USED BLADE CONTAINER NO. 9845



Include it in your order now! With this mounting bracket you can fix your USED BLADE CONTAINER to a central location. Use the clamp and screws and nuts supplied with the product to attach it to either a pipe or a rod.

SAFEBOX NO. 108000



The SAFEBOX is large enough to store a large number of used blades safely. And at the same time, it is compact enough to carry with you. The two slits are not only used for filling, but also to „shorten“ your snap-off blades. When your SAFEBOX is full, empty it into your USED BLADE CONTAINER.

MANUFACTURER

MARTOR KG | Lindgesfeld 28 | 42653 Solingen | Germany
T +49 212 73870-0 | F +49 212 73870-90 | info@martor.de | www.martor.com